

**GOVERNING SPECIFICATIONS**

THE 2026 EDITION OF THE "IOWA STATEWIDE URBAN SPECIFICATIONS FOR PUBLIC IMPROVEMENTS" AND CITY OF KEOKUK SPECIFICATIONS.

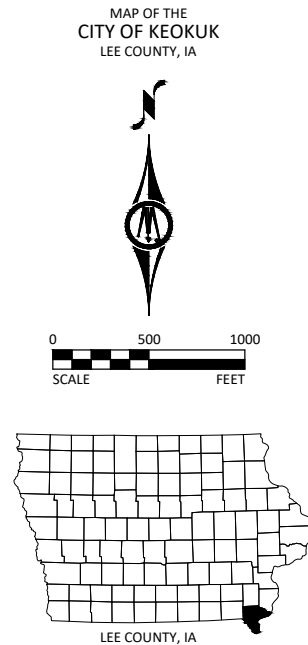
MUTCD 2023 AS ADOPTED BY IOWA DEPARTMENT OF TRANSPORTATION.

ALL APPLICABLE FEDERAL, STATE, AND LOCAL LAWS AND ORDINANCES WILL BE COMPLIED WITHIN THE CONSTRUCTION OF THIS PROJECT.



NOTE: EXISTING UTILITY INFORMATION SHOWN ON THIS PLAN HAS BEEN PROVIDED BY THE UTILITY OWNER. THE CONTRACTOR SHALL FIELD VERIFY EXACT LOCATIONS PRIOR TO COMMENCING CONSTRUCTION AS REQUIRED BY STATE LAW. NOTIFY IOWA ONE CALL 1-800-292-8989 OR 811

THE SUBSURFACE UTILITY INFORMATION IN THIS PLAN IS UTILITY QUALITY LEVEL D UNLESS OTHERWISE NOTED. THIS UTILITY LEVEL WAS DETERMINED ACCORDING TO THE GUIDELINES OF CI/ASCE 38-22, ENTITLED "STANDARD GUIDELINE FOR INVESTIGATING AND DOCUMENTING EXISTING UTILITIES".



# CITY OF KEOKUK

## CONSTRUCTION PLANS FOR

# 10TH STREET

# MILL & OVERLAY

APRIL 2026



PROJECT LOCATION

Sheet Number	Sheet Title
A.01	TITLE SHEET
A.02	LEGEND
B.01	TYPICAL SECTIONS
B.02	TYPICAL DETAILS
C.01	ESTIMATED QUANTITIES
C.02	ESTIMATE REFERENCE NOTES
D.01 - D.02	10TH STREET PLAN
F.01 - F.02	EXISTING CONDITIONS & REMOVALS PLAN
G.01 - G.03	REFERENCES & BENCHMARKS
K.01 - K.02	INTERSECTION DETAILS
R.01 - R.02	EROSION & SEDIMENT CONTROL
S.01	SIDEWALK COMPLIANCE - BANK STREET
S.02	SIDEWALK COMPLIANCE - EXCHANGE STREET

THIS PLAN SET CONTAINS **19** SHEETS.

PLAN REVISIONS		
DATE	SHEET NUMBER	APPROVED BY

I HEREBY CERTIFY THAT THIS ENGINEERING DOCUMENT WAS PREPARED BY ME OR UNDER MY DIRECT PERSONAL SUPERVISION AND THAT I AM A DULY LICENSED PROFESSIONAL ENGINEER UNDER THE LAWS OF THE STATE OF IOWA.

*David Millmeyer*  
DAVID E. MILLMEYER, P.E.

LICENSE NUMBER: P28884      DATE: 2026/04/01

MY LICENSE RENEWAL DATE IS DECEMBER 31, 2027

PAGES OR SHEETS COVERED BY THIS SEAL:

ALL SHEETS

© Bolton & Menk, Inc. 2026. All Rights Reserved. I:\MECH\CI-1A\2524-01\03\000\CAD\141031301.dwg 4/1/2026 9:46:43 AM



401 FIRST ST SE, SUITE 201  
CEDAR RAPIDS, IOWA 52401  
Phone: (319) 362-3219  
Email: CedarRapids@bolton-menk.com  
www.bolton-menk.com

DESIGNED	REV	DESCRIPTION	DATE
RCK	0	PRELIMINARY	
BRE			
DEM			
CLIENT PROJ. NO.	24X-136508000		

CITY OF KEOKUK, IOWA  
10TH STREET MILL AND OVERLAY  
TITLE SHEET

SHEET  
A.01

**EXISTING TOPOGRAPHIC SYMBOLS**

	ACCESS GRATE		REGULATION STATION GAS
	AIR CONDITION UNIT		SATELLITE DISH
	ANTENNA		SIGN TRAFFIC
	AUTO SPRINKLER CONNECTION		SIGNAL CONTROL CABINET
	BARRICADE PERMANENT		SOIL BORING
	BASKETBALL POST		SIREN
	BENCH		TELEPHONE BOOTH
	BIRD FEEDER		TILE INLET
	BOLLARD		TILE OUTLET
	BUSH		TILE RISER
	CATCH BASIN RECTANGULAR CASTING		TRANSFORMER-ELECTRIC
	CATCH BASIN CIRCULAR CASTING		TREE-CONIFEROUS
	CURB STOP		TREE-DEAD
	CLEAN OUT		TREE-DECIDUOUS
	CULVERT END		TREE STUMP
	DRINKING FOUNTAIN		TRAFFIC ARM BARRIER
	DOWN SPOUT		TRAFFIC SIGNAL
	ELECTRIC CAR CHARGE STATION		TRASH CAN
	FILL PIPE		UTILITY MARKER
	FIRE HYDRANT		VALVE
	FLAG POLE		VALVE POST INDICATOR
	FLARED END / APRON		VALVE VAULT
	FUEL PUMP		VAULT
	GRILL		VENT PIPE
	GUY WIRE ANCHOR		WATER SPIGOT
	HANDHOLE		WELL
	HANDICAP SPACE		WETLAND DELINEATED MARKER
	IRRIGATION SPRINKLER HEAD		WETLAND
	IRRIGATION VALVE BOX		WET WELL
	LIFT STATION CONTROL PANEL		YARD HYDRANT
	LIFT STATION		
	LIGHT POLE		
	MAILBOX		
	MANHOLE-COMMUNICATION		
	MANHOLE-ELECTRIC		
	MANHOLE-GAS		
	MANHOLE-HEAT		
	MANHOLE-RECLAIMED WATER		
	MANHOLE-SANITARY SEWER		
	MANHOLE-STORM SEWER		
	MANHOLE-UTILITY		
	MANHOLE-WATER		
	METER		
	DRIVE-THRU MICROPHONE		
	PARKING METER		
	PAVEMENT MARKING		
	PEDESTAL-COMMUNICATION		
	PEDESTAL-ELECTRIC		
	PEDESTRIAN PUSH BUTTON		
	PICNIC TABLE		
	POLE-UTILITY		
	POST		
	RAILROAD SIGNAL POLE		

**PROPOSED TOPOGRAPHIC SYMBOLS**

	CLEANOUT
	MANHOLE
	LIFT STATION
	STORM SEWER CIRCULAR CASTING
	STORM SEWER RECTANGULAR CASTING
	STORM SEWER FLARED END / APRON
	STORM SEWER OUTLET STRUCTURE
	STORM SEWER OVERFLOW STRUCTURE
	CURB BOX
	FIRE HYDRANT
	WATER VALVE
	WATER REDUCER
	WATER BEND
	WATER TEE
	WATER CROSS
	WATER SLEEVE
	WATER CAP / PLUG
	RIP RAP
	DRAINAGE FLOW
	TRAFFIC SIGNS
	LIGHT POLE

**SURVEY SYMBOLS**

	BENCHMARK LOCATION		CAST IRON MONUMENT
	CONTROL POINT		STONE MONUMENT
	MONUMENT FOUND		

**EXISTING TOPOGRAPHIC LINES**

	RETAINING WALL
	FENCE
	FENCE-DECORATIVE
	GUARD RAIL
	TREE LINE
	BUSH LINE

**SURVEY LINES**

	CONTROLLED ACCESS
	BOUNDARY
	CENTERLINE
	EXISTING EASEMENT LINE
	PROPOSED EASEMENT LINE
	EXISTING LOT LINE
	PROPOSED LOT LINE
	EXISTING RIGHT-OF-WAY
	PROPOSED RIGHT-OF-WAY
	SETBACK LINE
	SECTION LINE
	QUARTER LINE
	SIXTEENTH LINE
	TEMPORARY EASEMENT

**EXISTING UTILITY LINES**

	FORCEMAIN
	SANITARY SEWER
	SANITARY SERVICE
	STORM SEWER
	STORM SEWER DRAIN TILE
	WATER MAIN
	WATER SERVICE
	RECLAIMED WATER

**PROPOSED UTILITY LINES**

	FORCEMAIN
	SANITARY SEWER
	SANITARY SERVICE
	STORM SEWER
	STORM SEWER DRAIN TILE
	WATER MAIN
	WATER SERVICE
	PIPE CASING
	TRENCHLESS PIPE (PLAN VIEW)
	TRENCHLESS PIPE (PROFILE VIEW)

**GRADING INFORMATION**

	EXISTING CONTOUR MINOR
	EXISTING CONTOUR MAJOR
	PROPOSED CONTOUR MINOR
	PROPOSED CONTOUR MAJOR
	PROPOSED GRADING LIMITS / SLOPE LIMITS
	PROJECT LIMITS
	PROPOSED SPOT ELEVATION
	RISE:RUN (SLOPE)

**HATCH PATTERNS**

	HMA PAVEMENT		SIDEWALK		PCC PAVEMENT
--	--------------	--	----------	--	--------------

**EXISTING PRIVATE UTILITY LINES**

NOTE: EXISTING UTILITY INFORMATION SHOWN ON THIS PLAN HAS BEEN PROVIDED BY THE UTILITY OWNER. THE CONTRACTOR SHALL FIELD VERIFY EXACT LOCATIONS PRIOR TO COMMENCING CONSTRUCTION AS REQUIRED BY STATE LAW. NOTIFY IOWA ONE CALL - 1-800-292-8989

THE SUBSURFACE UTILITY INFORMATION IN THIS PLAN IS UTILITY QUALITY LEVEL D UNLESS OTHERWISE NOTED. THIS UTILITY LEVEL WAS DETERMINED ACCORDING TO THE GUIDELINES OF CI/ASCE 38-02, ENTITLED "STANDARD GUIDELINE FOR INVESTIGATING AND DOCUMENTING EXISTING UTILITIES".

	UNDERGROUND FIBER OPTIC
	UNDERGROUND ELECTRIC
	UNDERGROUND GAS
	UNDERGROUND COMMUNICATION
	OVERHEAD ELECTRIC
	OVERHEAD COMMUNICATION
	OVERHEAD UTILITY

UTILITIES IDENTIFIED WITH A QUALITY LEVEL OTHER THAN D:

LINE TYPES FOLLOW THE FORMAT: UTILITY TYPE - QUALITY LEVEL  
 EXAMPLE: UNDERGROUND GAS, QUALITY LEVEL A  
 UTILITY QUALITY LEVEL (A,B,C,D) DEFINITIONS CAN BE FOUND IN CI/ASCE 38-22.

UTILITY QUALITY LEVELS:

LEVEL D - INFORMATION COMES SOLELY FROM EXISTING UTILITY RECORDS.

LEVEL C - SURVEYING ABOVE GROUND UTILITY FACILITIES, SUCH AS MANHOLES, VALVE BOXES, ETC; AND CORRELATING THIS INFORMATION WITH EXISTING UTILITY RECORDS.

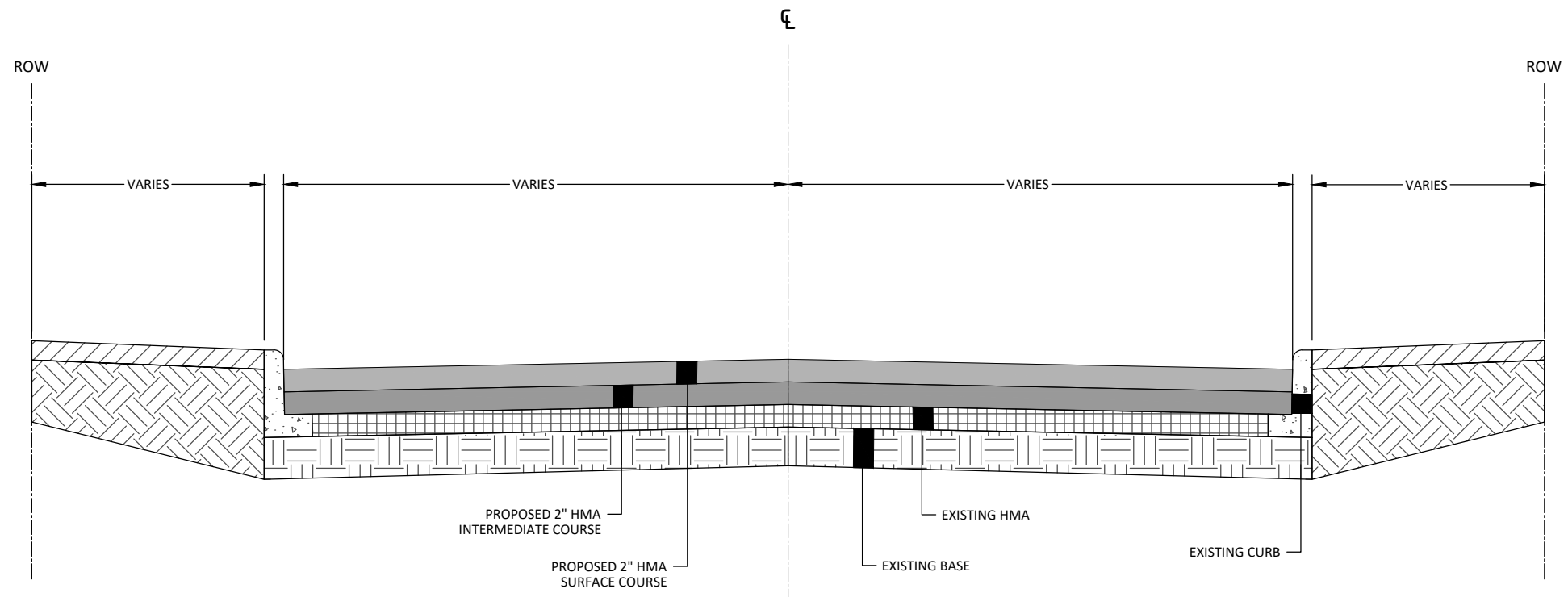
LEVEL B - THE USE OF SURFACE GEOPHYSICAL TECHNIQUES TO DETERMINE THE EXISTENCE AND HORIZONTAL POSITION OF UNDERGROUND UTILITIES.

LEVEL A - THE USE OF NONDESTRUCTIVE DIGGING EQUIPMENT AT HORIZONTAL AND VERTICAL POSITION OF UNDERGROUND UTILITIES, AS WELL AS THE TYPE, SIZE, CONDITION, MATERIAL, AND OTHER CHARACTERISTICS.

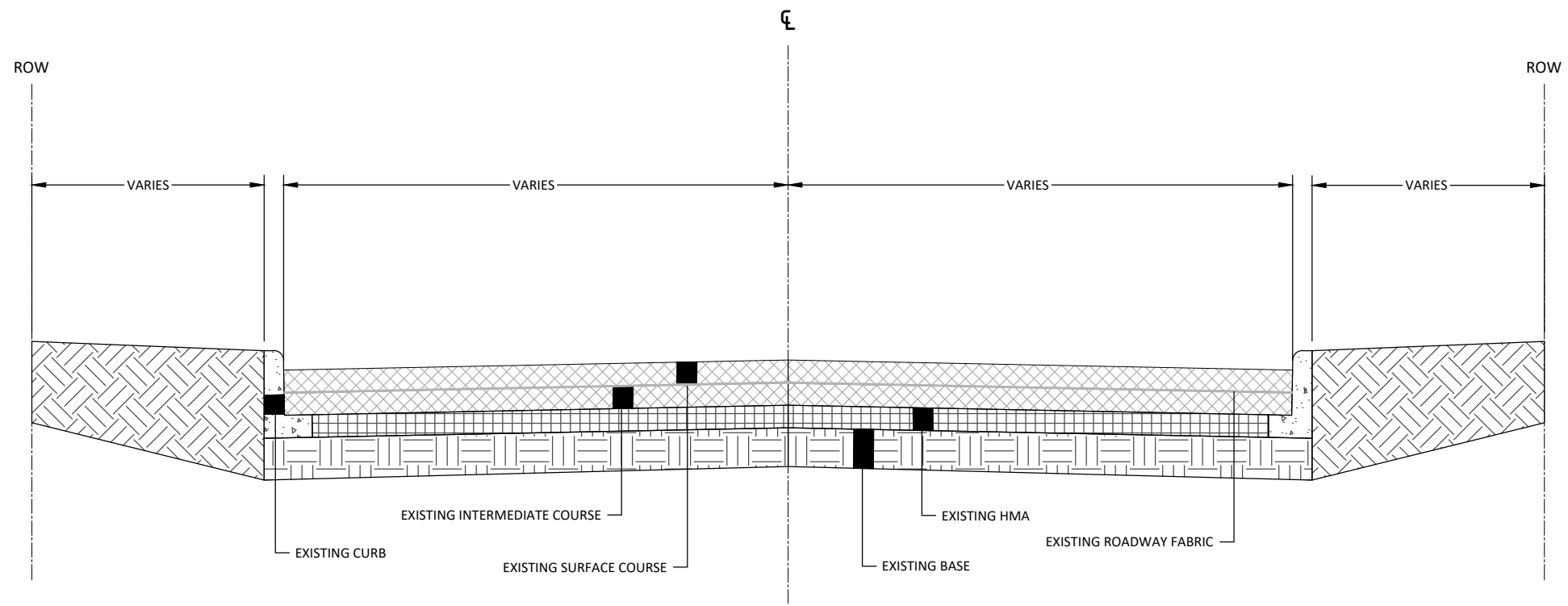
**ABBREVIATIONS**

A	ALGEBRAIC DIFFERENCE	GV	GATE VALVE	SAN	SANITARY SEWER
ADJ	ADJUST	HDPE	HIGH DENSITY POLYETHYLENE	SCH	SCHEDULE
ALT	ALTERNATE	HH	HANDHOLE	SERV	SERVICE
B-B	BACK TO BACK	HMA	HOT MIX ASPHALT	SHLD	SHOULDER
BLDG	BUILDING	HP	HIGH POINT	STA	STATION
BMP	BEST MANAGEMENT PRACTICE	HWL	HIGH WATER LEVEL	STD	STANDARD
BR	BEGIN RADIUS	HYD	HYDRANT	STM	STORM SEWER
BV	BUTTERFLY VALVE	I	INVERT	TC	TOP OF CURB
CB	CATCH BASIN	K	CURVE COEFFICIENT	TE	TEMPORARY EASEMENT
C&G	CURB AND GUTTER	L	LENGTH	TEMP	TEMPORARY
CIP	CAST IRON PIPE	LO	LOWEST OPENING	TNH	TOP NUT HYDRANT
CIPP	CURED-IN-PLACE PIPE	LP	LOW POINT	TP	TOP OF PIPE
CL	CENTER LINE	LT	LEFT	TYP	TYPICAL
CL	CLASS	MH	MANHOLE	VCP	VITRIFIED CLAY PIPE
CMP	CORRUGATED METAL PIPE	MIN	MINIMUM	VERT	VERTICAL
C.O.	CHANGE ORDER	MR	MID RADIUS	VPC	VERTICAL POINT OF CURVE
COMM	COMMUNICATION	NIC	NOT IN CONTRACT	VPI	VERTICAL POINT OF INTERSECTION
CSP	CORRUGATED STEEL PIPE	NMC	NON-METALLIC CONDUIT	VPT	VERTICAL POINT OF TANGENT
CLVT	CULVERT	NTS	NOT TO SCALE	WM	WATERMAIN
DIA	DIAMETER	NWL	NORMAL WATER LEVEL	WS	WATER SERVICE
DIP	DUCTILE IRON PIPE	OHW	ORDINARY HIGH WATER LEVEL		
DWY	DRIVEWAY	PC	POINT OF CURVE		
E	EXTERNAL CURVE DISTANCE	PCC	PORTLAND CEMENT CONCRETE	AC	ACRES
ESMT	EASEMENT	PE	PERMANENT EASEMENT	CF	CUBIC FEET
ELEC	ELECTRIC	PED	PEDESTRIAN, PEDESTAL	CV	COMPACTED VOLUME
ELEV/EL	ELEVATION	PERF	PERFORATED PIPE	CY	CUBIC YARD
EOF	EMERGENCY OVERFLOW	PERM	PERMANENT	EA	EACH
ER	END RADIUS	PI	POINT OF INTERSECTION	EV	EXCAVATED VOLUME
EX	EXISTING	PL	PROPERTY LINE	LB	POUND
FES	FLARED END SECTION	PRC	POINT OF REVERSE CURVE	LF	LINEAR FEET
F-F	FACE TO FACE	PT	POINT OF TANGENT	LS	LUMP SUM
FF	FINISHED FLOOR	PVC	POLYVINYL CHLORIDE PIPE	LV	LOOSE VOLUME
F&I	FURNISH AND INSTALL	PVMT	PAVEMENT	SF	SQUARE FEET
FM	FORCEMAIN	R	RADIUS	SV	STOCKPILE VOLUME
FO	FIBER OPTIC	RCP	REINFORCED CONCRETE PIPE	SY	SQUARE YARD
F.O.	FIELD ORDER	RET	RETAINING		
GRAN	GRANULAR	R/W	RIGHT-OF-WAY		
GRAV	GRAVEL	RSC	RIGID STEEL CONDUIT		
GU	GUTTER	RT	RIGHT		

DESIGNED	REV	DESCRIPTION	DATE
RCK	0	PRELIMINARY	
BRH			
DEM			
CLIENT PROJ. NO.	24X.136508000		



**1**  
B.01 **PROPOSED TYPICAL SECTION**  
STA: 11+60.00 TO 28+50.00 NOT TO SCALE



**2**  
B.01 **EXISTING TYPICAL SECTION**  
NOT TO SCALE

© Bolton & Menk, Inc. 2025. All Rights Reserved. A:\MECHUK\_C\142524\1031000\1031000\1031000\1031000.dwg 4/1/2025 9:46:43 AM

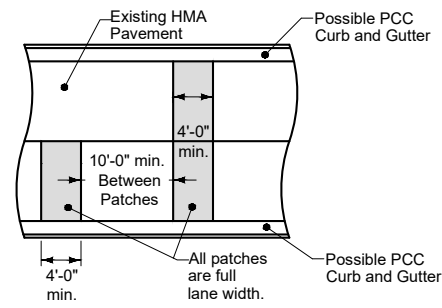


401 FIRST ST SE, SUITE 201  
CEDAR RAPIDS, IOWA 52401  
Phone: (319) 362-3219  
Email: CedarRapids@bolton-menk.com  
www.bolton-menk.com

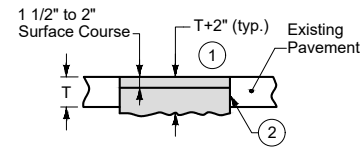
DESIGNED	REV	DESCRIPTION	DATE
RCK	0	PRELIMINARY	
DRAWN	BRH		
CHECKED	DEM		
CLIENT PROJ. NO.	24X.136508000		

CITY OF KEOKUK, IOWA  
10TH STREET MILL AND OVERLAY  
TYPICAL SECTIONS

SHEET  
B.01

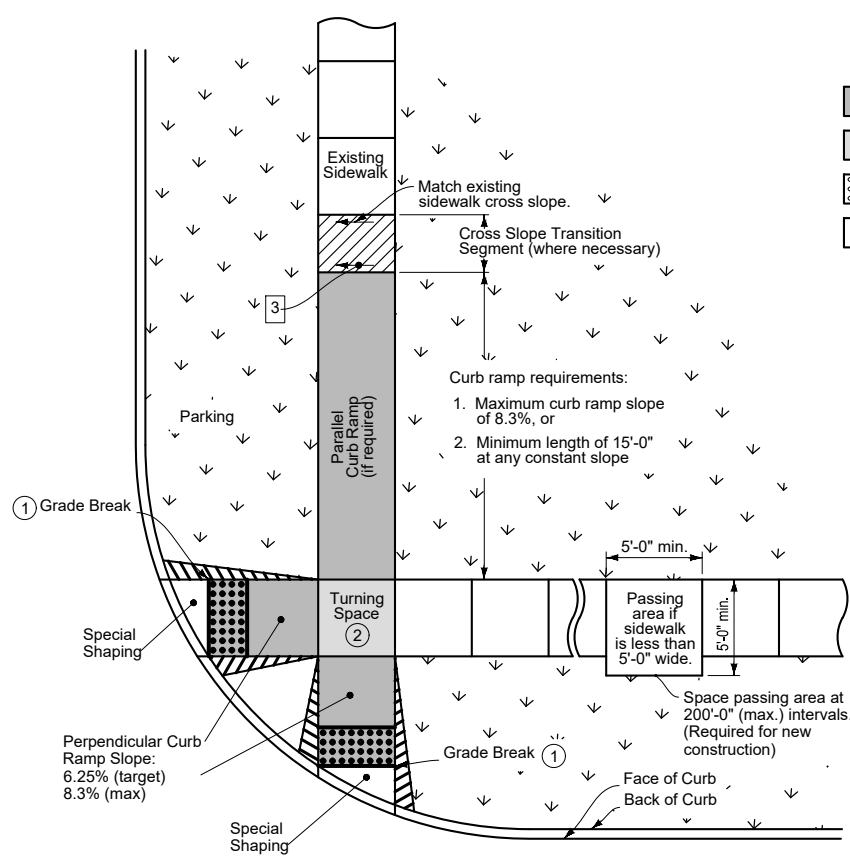


**HMA PATCHES**  
SUDAS 7040.103



**LONGITUDINAL SECTION**  
THRU HMA PATCH  
SUDAS 7040.103

- ① If subgrade or subbase material is required below patch, bring material to a level 2 inches below bottom of existing pavement.
- ② When removing pavement, saw to full depth or 10 inches, whichever is less.



- Key
- █ Curb Ramp
  - █ Turning Space
  - ▣ Detectable Warning
  - ▣ Grass

- ① Match pedestrian street crossing slope, or flatter.
- ② Minimum 4 feet by 4 feet. Target cross slope of 1.5% with a maximum cross slope of 2.0%.
- ③ Target cross slope of 1.5% with a maximum cross slope of 2.0%.

© Bolton & Menk, Inc. 2025. All Rights Reserved. A:\MECHUK\_C\142524\103\103\103\103.dwg 4/1/2025 9:46:44 AM



401 FIRST ST SE, SUITE 201  
CEDAR RAPIDS, IOWA 52401  
Phone: (319) 362-3219  
Email: CedarRapids@bolton-menk.com  
www.bolton-menk.com

DESIGNED	REV	DESCRIPTION	DATE
RCK	0	PRELIMINARY	
DRAWN	BRH		
CHECKED	DEM		
CLIENT PROJ. NO.	24X.136508000		

CITY OF KEOKUK, IOWA  
10TH STREET MILL AND OVERLAY  
TYPICAL DETAILS

SHEET  
B.02

**ESTIMATED PROJECT QUANTITIES**

ITEM NO.	ITEM CODE	ITEM	UNIT	DIVISION	AS BUILT QUANT.	TOTAL EST. QUANT.
1	2010-D-1	TOPSOIL, ON-SITE	CY	25		25
2	2010-D-3	TOPSOIL, OFF-SITE	CY	25		25
3	2010-E	EXCAVATION, CLASS 10	CY	15		15
4	5020-F	VALVE BOX ADJUSTMENT, MINOR	EA	7		7
5	6010-E	MANHOLE ADJUSTMENT, MINOR	EA	3		3
6	7010-E	CURB AND GUTTER, PCC, 2-FOOT WIDE, 6-INCH THICK	LF	1400		1400
7	7010-F	BEAM CURB, 6-INCH	LF	60		60
8	7020-A	PAVEMENT, HMA, STANDARD TRAFFIC (ST) SURFACE	TON	670		670
9	7020-A	PAVEMENT, HMA, STANDARD TRAFFIC (ST) INTERMEDIATE	TON	670		670
10	7030-A-1	REMOVAL OF SIDEWALK	SY	191		191
11	7030-E	SIDEWALK, PCC, 5-INCH	SY	65		65
12	7030-E	SIDEWALK, PCC, 6-INCH	SY	130		130
13	7030-G	DETECTABLE WARNING	SF	160		160
14	7040-A	FULL DEPTH PATCHES, HMA	SY	775		775
15	7040-G	MILLING, 4-INCH	SY	5250		5250
16	7040-I	CURB AND GUTTER REMOVAL	LF	1400		1400
17	8030-A	TEMPORARY TRAFFIC CONTROL	LS	1		1
18	9020-A	SOD	SY	191		191
19	9040-F-1	WATTLE, STRAW, 12-INCH	LF	282		282
20	9040-F-2	WATTLE, REMOVAL	LF	282		282
21	9040-T-1	INLET PROTECTION DEVICE, OPEN THROAT CURB INTAKE	EA	5		5
22	9040-T-2	INLET PROTECTION DEVICE, MAINTENANCE	EA	15		15
23	9060-D	REMOVAL AND REINSTALLATION OF EXISTING FENCE, CHAIN LINK	LF	17		17
24	11010-A	CONSTRUCTION SURVEY	LS	1		1
25	11020-A	MOBILIZATION	LS	1		1

© Bolton & Menk, Inc. 2025. All Rights Reserved. P:\MENK\CI\142524\1031000\1031000\1031000\1031000.dwg 4/1/2025 9:46:44 AM



401 FIRST ST SE, SUITE 201  
 CEDAR RAPIDS, IOWA 52401  
 Phone: (319) 362-3219  
 Email: CedarRapids@bolton-menk.com  
 www.bolton-menk.com

DESIGNED	REV	DESCRIPTION	DATE
RCK	0	PRELIMINARY	
DRAWN			
BRH			
CHECKED			
DEM			
CLIENT PROJ. NO.	24X.136508000		

CITY OF KEOKUK, IOWA  
 10TH STREET MILL AND OVERLAY  
 ESTIMATED QUANTITIES

SHEET  
**C.01**

**ESTIMATE REFERENCE INFORMATION**

ITEM NO.	ITEM CODE	DESCRIPTION
1	2010-D-1	<u>TOPSOIL, ON-SITE</u>  QUANTITY OF ON-SITE TOPSOIL IS BASED ON STRIPPING 6-INCH DEPTH. TOPSOIL SHALL BE PLACED AT ALL LOCATIONS TO BE SODDED AT A MINIMUM DEPTH OF 8 INCHES. REFER TO 'R' SHEETS FOR LOCATIONS.
2	2010-D-3	<u>TOPSOIL, OFF-SITE</u>  TOPSOIL SHALL BE PLACED AT ALL LOCATIONS TO BE SODDED AT A MINIMUM DEPTH OF 8 INCHES. REFER TO 'R' SHEETS FOR LOCATIONS.
3	2010-E	<u>EXCAVATION, CLASS 10</u>  THIS ITEM WILL BE PLAN QUANTITY AND NO MEASUREMENT WILL BE MADE FOR PAYMENT.
4	5020-F	<u>VALVE BOX ADJUSTMENT, MINOR</u>  REFER TO 'F' SHEETS FOR LOCATIONS.
5	6010-E	<u>MANHOLE ADJUSTMENT, MINOR</u>  THIS BID ITEM SHALL INCLUDE ALL MATERIALS, LABOR, AND EQUIPMENT NECESSARY TO ADJUST ELEVATION OF MANHOLE CASTING TO FINISHED GRADE. IF ADJUSTMENTS ARE DEEMED NECESSARY, THE CONTRACTOR SHALL REPLACE THE EXISTING CASTING WITH A NEW CASTING. REFER TO 'F' SHEETS FOR LOCATIONS.
6	7010-E	<u>CURB AND GUTTER, PCC, 2-FOOT WIDE, 6-INCH THICK</u>  IOWA DOT C-3 OR C-4 SHALL BE USED FOR THIS ITEM. REFER TO 'D' SHEETS FOR LOCATIONS. QUANTITY IS BASED ON CALCULATED LINEAR FOOTAGE PLUS AN ASSUMED 50% OF PROJECT LENGTH. 6 INCHES OF MODIFIED SUBBASE UNDER THE CURB AND 1' EXTENDED BEHIND BACK OF THE CURB IS INCIDENTAL TO THIS ITEM. THIS ITEM WILL ONLY BE USED WITH THE PRIOR APPROVAL OF A CITY OF KEOKUK REPRESENTATIVE.
7	7010-F	<u>BEAM CURB, 6-INCH</u>  THIS ITEM IS FOR 6-INCH BEAM CURB ALONG OUTSIDE EDGE OF SIDEWALK. REFER TO SHEET D.01 AND SHEET S.01 FOR LOCATIONS.
8	7020-A	<u>PAVEMENT, HMA, STANDARD TRAFFIC (ST) SURFACE</u>  THIS ITEM SHALL INCLUDE ALL MATERIALS, LABOR, AND EQUIPMENT NECESSARY TO INSTALL HMA PAVEMENT AS SPECIFIED IN THE PLAN DRAWINGS. SURFACE PREPARATION, TACK COAT BITUMEN, AND REMOVAL OF ALL ORGANIC MATERIALS ARE INCIDENTAL TO THIS ITEM. TACK COAT IS REQUIRED BETWEEN ALL HMA LIFTS. THIS ITEM DOES NOT INCLUDE QUANTITY FOR FULL DEPTH PATCH AREAS. REFER TO 'B' SHEETS FOR TYPICAL PAVEMENT SECTIONS. REFER TO 'D' SHEETS FOR LAYOUT.
9	7020-A	<u>PAVEMENT, HMA, STANDARD TRAFFIC (ST) INTERMEDIATE</u>  THIS ITEM SHALL INCLUDE ALL MATERIALS, LABOR, AND EQUIPMENT NECESSARY TO INSTALL HMA PAVEMENT AS SPECIFIED IN THE PLAN DRAWINGS. SURFACE PREPARATION, TACK COAT BITUMEN, AND REMOVAL OF ALL ORGANIC MATERIALS ARE INCIDENTAL TO THIS ITEM. TACK COAT IS REQUIRED BETWEEN ALL HMA LIFTS. THIS ITEM DOES NOT INCLUDE QUANTITY FOR FULL DEPTH PATCH AREAS. REFER TO 'B' SHEETS FOR TYPICAL PAVEMENT SECTIONS. REFER TO 'D' SHEETS FOR LAYOUT.
10	7030-A-1	<u>REMOVAL OF SIDEWALK</u>  REFER TO 'F' SHEETS FOR LOCATIONS.
11	7030-E	<u>SIDEWALK, PCC, 5-INCH</u>  IOWA DOT C-3 OR C-4 SHALL BE USED FOR THIS ITEM. REFER TO 'S' SHEETS FOR LOCATIONS.
12	7030-E	<u>SIDEWALK, PCC, 6-INCH</u>  IOWA DOT C-3 OR C-4 SHALL BE USED FOR THIS ITEM. REFER TO 'S' SHEETS FOR LOCATIONS.
13	7030-G	<u>DETECTABLE WARNING</u>  REFER TO 'S' SHEETS FOR LOCATIONS.
14	7040-A	<u>FULL DEPTH PATCHES, HMA</u>  REFER TO 'F' SHEETS FOR LOCATIONS. ADDITIONAL FULL DEPTH PATCH LOCATIONS NOT INCLUDED IN PLANS SHALL BE IDENTIFIED BY THE CITY OR ENGINEER AFTER MILLING HAS BEEN COMPLETED. THIS ITEM SHALL INCLUDE REMOVAL OF EXISTING PAVEMENT, CLEANING OF THE PATCH AREA, COMPACTION OF SUBBASE, AND NEW ASPHALT PAVEMENT PLACED IN LIFTS AND COMPACTED. LIFT THICKNESS SHALL NOT EXCEED THREE INCHES. QUANTITY IS BASED ON CALCULATED SQUARE YARDAGE SHOWN IN THE 'F' SHEETS, PLUS AN ASSUMED 10% OF MILLING AREA. THIS ITEM WILL ONLY BE USED WITH THE PRIOR APPROVAL OF A CITY OF KEOKUK REPRESENTATIVE.

15	7040-G	<u>MILLING, 4-INCH</u>  REFER TO 'F' SHEETS FOR LOCATIONS. THE EXISTING PAVEMENT INCLUDES ROADWAY FABRIC. IT IS THE CONTRACTOR'S RESPONSIBILITY TO LEGALLY DISPOSE OF MATERIAL AT AN OFF-SITE WASTE AREA.
16	7040-I	<u>CURB AND GUTTER REMOVAL</u>  REFER TO 'F' SHEETS FOR LOCATIONS. ADDITIONAL CURB REMOVAL LOCATIONS NOT INCLUDED IN PLANS SHALL BE IDENTIFIED BY THE CITY OR ENGINEER AFTER MILLING HAS BEEN COMPLETED. QUANTITY IS BASED ON CALCULATED LINEAR FOOTAGE PLUS AN ASSUMED 50% OF PROJECT LENGTH. THIS ITEM WILL ONLY BE USED WITH THE PRIOR APPROVAL OF A CITY OF KEOKUK REPRESENTATIVE.
17	8030-A	<u>TEMPORARY TRAFFIC CONTROL</u>  SHOULD THE CONTRACTOR CHOOSE TO USE FLAGGERS, THE FLAGGERS SHALL BE INCIDENTAL TO THIS ITEM. ALL TRAFFIC CONTROL SHALL MEET THE REQUIREMENTS OF THE MANUAL FOR UNIFORM TRAFFIC CONTROL DEVICES FOR STREETS AND HIGHWAYS. SIGNS, BARRICADES, AND FENCE ARE TO BE SUFFICIENTLY SECURED TO PREVENT MOVEMENT BY NATURAL FORCES AT ALL TIMES. OVERNIGHT ROAD CLOSURES WILL NOT BE PERMITTED.
18	9020-A	<u>SOD</u>  SOD SHALL BE LAWN GRASS. REFER TO 'R' SHEETS FOR LOCATIONS.
19	9040-F-1	<u>WATTLE, STRAW, 12-INCH</u>  REFER TO 'R' SHEETS FOR LOCATIONS.
20	9040-F-2	<u>WATTLE, REMOVAL</u>  REFER TO 'R' SHEETS FOR LOCATIONS.
21	9040-T-1	<u>INLET PROTECTION DEVICE, OPEN THROAT CURB INTAKE</u>  REFER TO 'R' SHEETS FOR LOCATIONS.
22	9040-T-2	<u>INLET PROTECTION DEVICE, MAINTENANCE</u>  REFER TO 'R' SHEETS FOR LOCATIONS.
23	9060-D	<u>REMOVAL AND REINSTALLATION OF EXISTING FENCE, CHAIN LINK</u>  REFER TO SHEET F.02 FOR LOCATION. CONTRACTOR SHALL MATCH EXISTING FENCE MATERIAL AND STYLE.
24	11010-A	<u>CONSTRUCTION SURVEY</u>  A. THIS ITEM IS FOR ALL SURVEY WORK NECESSARY FOR CONSTRUCTION OF THIS PROJECT AS DETAILED ON THE CONSTRUCTION DOCUMENTS AND APPROVED REVISIONS. ELECTRONIC DRAWING ARE AVAILABLE FOR THE CONTRACTORS USE. REFER TO 'G' SHEETS FOR CONTROL POINT AND BENCHMARK LOCATIONS.
25	11020-A	<u>MOBILIZATION</u>  MISCELLANEOUS MINOR WORK ITEMS WITH NO BID ITEM IN THE PLANS AND WHICH HAVE NO STANDARD BID ITEM SHALL BE INCIDENTAL TO THIS ITEM.

© Bolton & Menk, Inc. 2025. All Rights Reserved. P:\KEOKUK\_C\142524\14252403\14252403.dwg 4/1/2025 9:46:44 AM

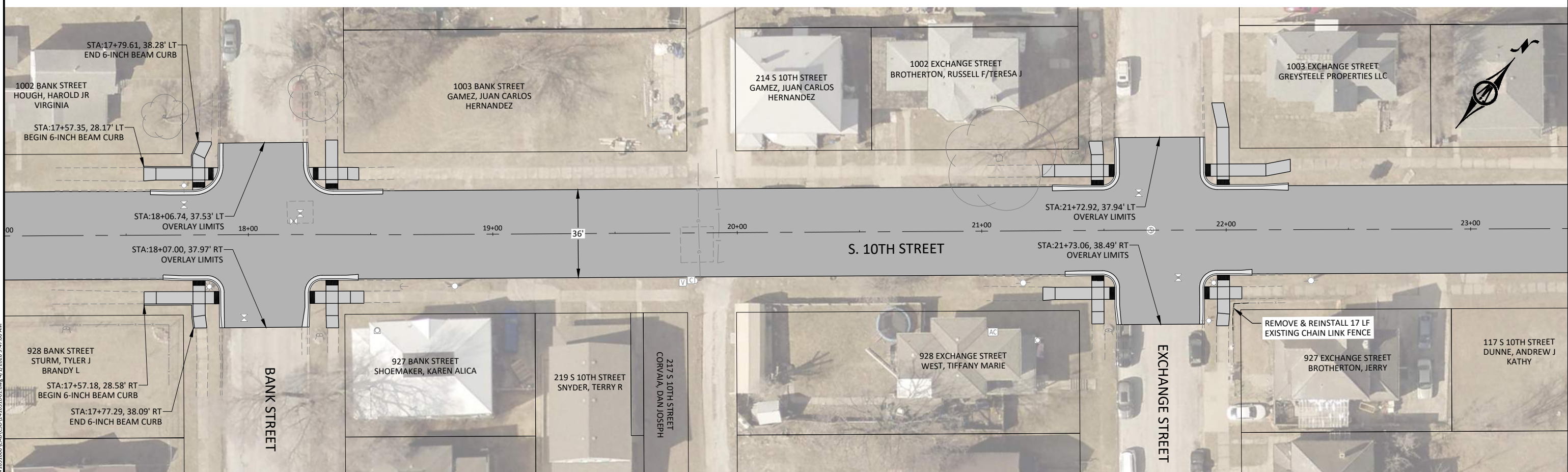
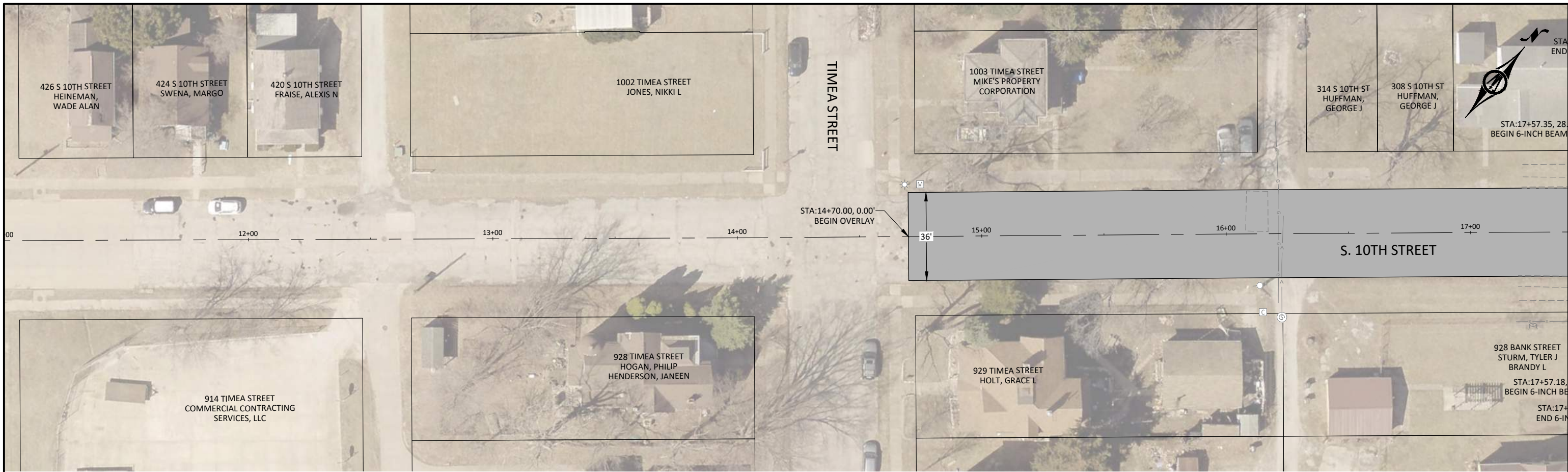


401 FIRST ST SE, SUITE 201  
CEDAR RAPIDS, IOWA 52401  
Phone: (319) 362-3219  
Email: CedarRapids@bolton-menk.com  
www.bolton-menk.com

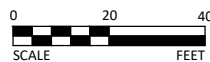
DESIGNED	REV	DESCRIPTION	DATE
RCK	0	PRELIMINARY	
DRAWN			
BRH			
CHECKED			
DEM			
CLIENT PROJ. NO.			
24X-136508000			

CITY OF KEOKUK, IOWA  
10TH STREET MILL AND OVERLAY  
ESTIMATE REFERENCE NOTES

SHEET  
C.02



© Bolton & Menk, Inc. 2026. All Rights Reserved. P:\MECH\24-103100\103100.dwg 4/1/2026 9:47:06 AM

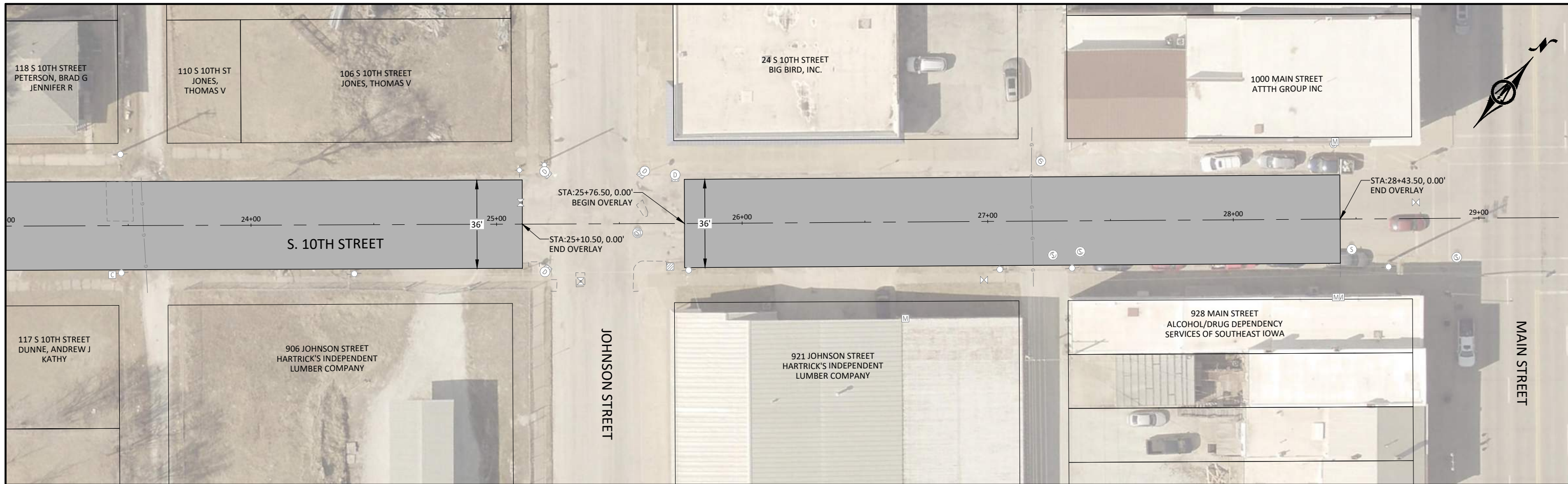


**BOLTON & MENK**  
 401 FIRST ST SE, SUITE 201  
 CEDAR RAPIDS, IOWA 52401  
 Phone: (319) 362-3219  
 Email: CedarRapids@bolton-menk.com  
 www.bolton-menk.com

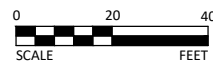
DESIGNED	REV	DESCRIPTION	DATE
RCK	0	PRELIMINARY	
BRE			
DEM			
CLIENT PROJ. NO.:		24X.136508000	

CITY OF KEOKUK, IOWA  
 10TH STREET MILL AND OVERLAY  
 10TH STREET PLAN

SHEET  
**D.01**



© Bolton & Menk, Inc. 2026. All Rights Reserved. P:\MECHUK\_C\142524\1031000\1031000\1031000.dwg 4/1/2026 9:47:08 AM



401 FIRST ST SE, SUITE 201  
 CEDAR RAPIDS, IOWA 52401  
 Phone: (319) 362-3219  
 Email: CedarRapids@bolton-menk.com  
 www.bolton-menk.com






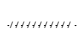
DESIGNED	REV	DESCRIPTION	DATE
RCK	0	PRELIMINARY	
DRAWN			
BRH			
CHECKED			
DEM			
CLIENT PROJ. NO.	24X.136508000		

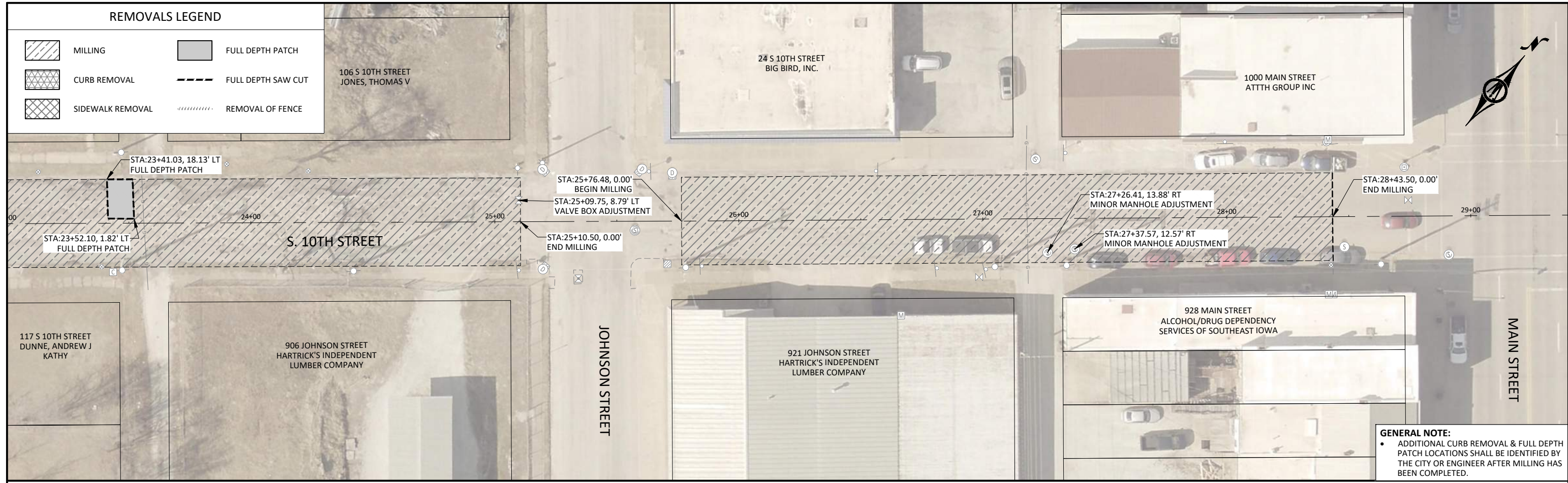
CITY OF KEOKUK, IOWA  
 10TH STREET MILL AND OVERLAY  
 10TH STREET PLAN

SHEET  
 D.02



**REMOVALS LEGEND**

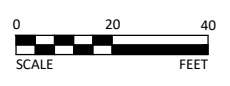
-  MILLING
-  CURB REMOVAL
-  SIDEWALK REMOVAL
-  FULL DEPTH PATCH
-  FULL DEPTH SAW CUT
-  REMOVAL OF FENCE



**GENERAL NOTE:**

- ADDITIONAL CURB REMOVAL & FULL DEPTH PATCH LOCATIONS SHALL BE IDENTIFIED BY THE CITY OR ENGINEER AFTER MILLING HAS BEEN COMPLETED.

© Bolton & Menk, Inc. 2026. All Rights Reserved. P:\MECHUK\_C\142524\142524-100\142524-100.dwg 4/1/2026 9:47:34 AM

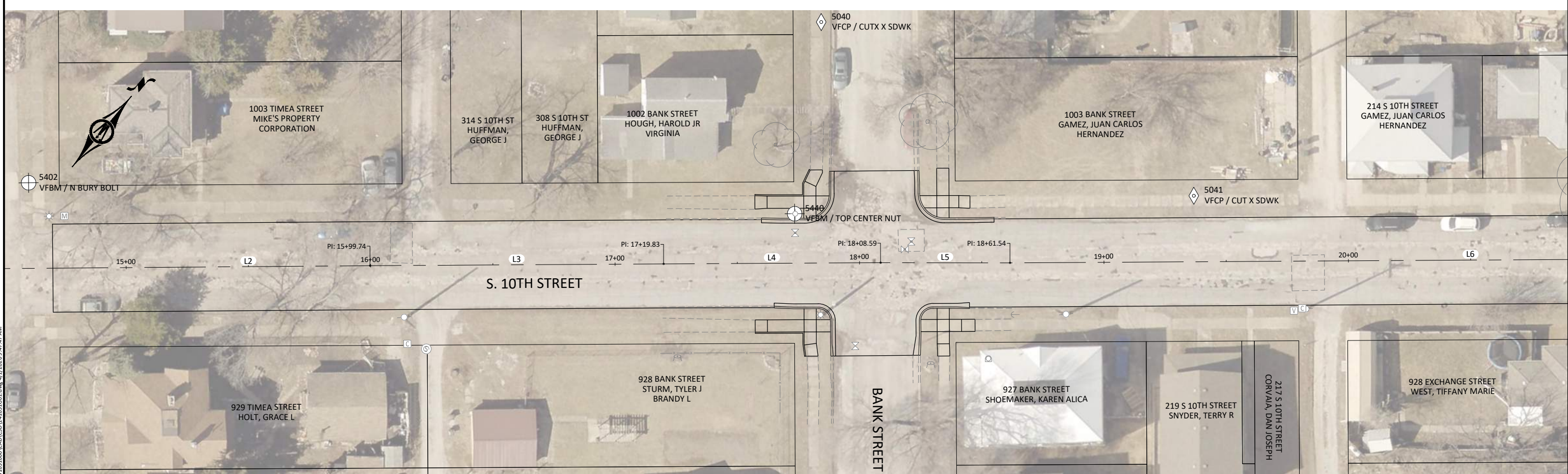


401 FIRST ST SE, SUITE 201  
CEDAR RAPIDS, IOWA 52401  
Phone: (319) 362-3219  
Email: CedarRapids@bolton-menk.com  
www.bolton-menk.com

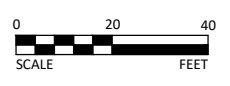
DESIGNED	REV	DESCRIPTION	DATE
RCK	0	PRELIMINARY	
DRAWN			
BRH			
CHECKED			
DEM			
CLIENT PROJ. NO.	24X-136508000		

CITY OF KEOKUK, IOWA  
10TH STREET MILL AND OVERLAY  
EXISTING CONDITIONS & REMOVALS PLAN

SHEET  
F.02



© Bolton & Menk, Inc. 2026. All Rights Reserved. 24X136508000.LCAD(141031601.dwg, 4/1/2026 9:47:47 AM)

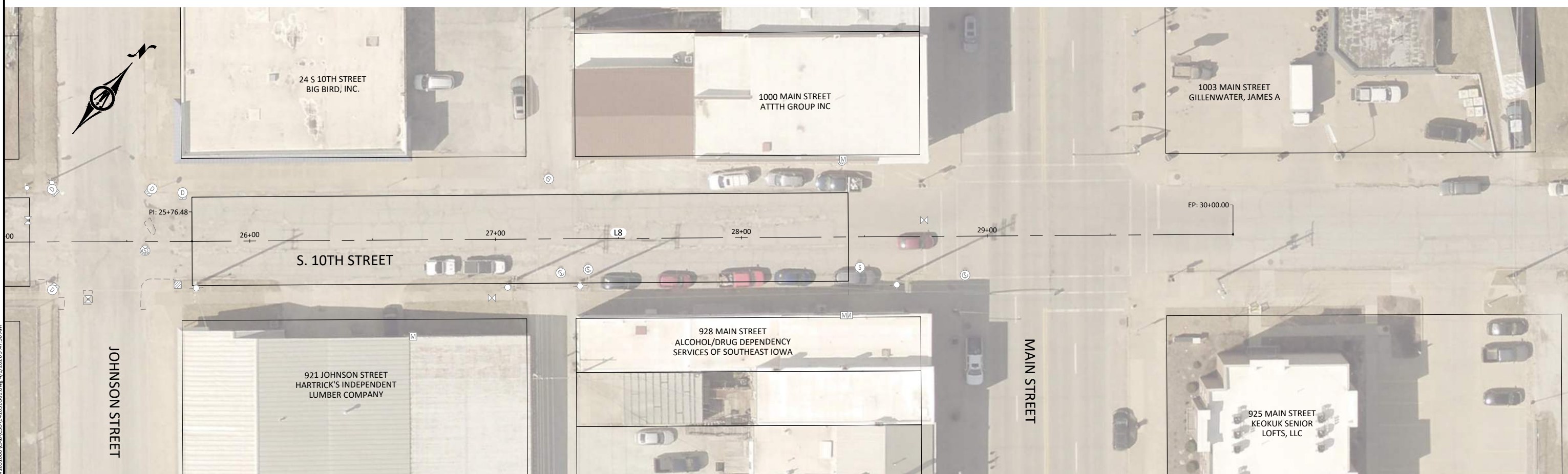
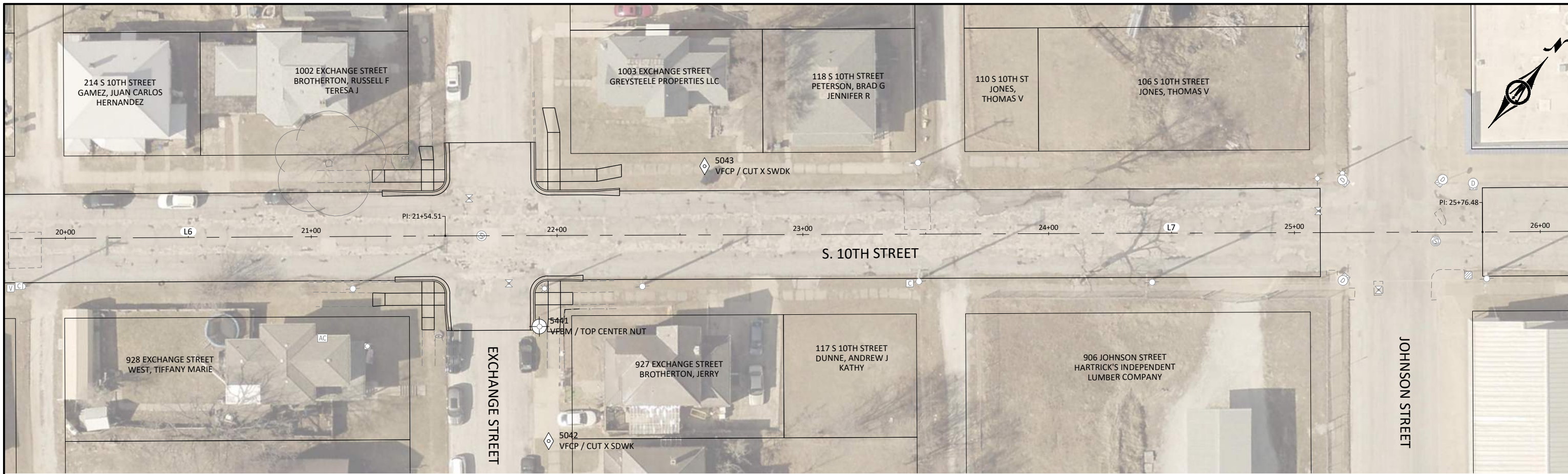


**BOLTON & MENK**  
 401 FIRST ST SE, SUITE 201  
 CEDAR RAPIDS, IOWA 52401  
 Phone: (319) 362-3219  
 Email: CedarRapids@bolton-menk.com  
 www.bolton-menk.com

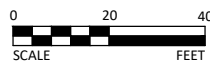
DESIGNED	REV	DESCRIPTION	DATE
RCK	0	PRELIMINARY	
DRAWN			
BRH			
CHECKED			
DEM			
CLIENT PROJ. NO.	24X.136508000		

**CITY OF KEOKUK, IOWA**  
 10TH STREET MILL AND OVERLAY  
 REFERENCES & BENCHMARKS

SHEET  
**G.01**



© Bolton & Menk, Inc. 2026. All Rights Reserved. P:\MECH\24-1031000\1031000-1031001.dwg, 4/1/2026 9:47:50 AM



**BOLTON & MENK**  
 401 FIRST ST SE, SUITE 201  
 CEDAR RAPIDS, IOWA 52401  
 Phone: (319) 362-3219  
 Email: CedarRapids@bolton-menk.com  
 www.bolton-menk.com

DESIGNED	REV	DESCRIPTION	DATE
RCK	0	PRELIMINARY	
DRAWN			
BRH			
CHECKED			
DEM			
CLIENT PROJ. NO.	24X-136508000		

CITY OF KEOKUK, IOWA  
 10TH STREET MILL AND OVERLAY  
 REFERENCES & BENCHMARKS

SHEET  
**G.02**

SURVEY CONTROL POINT DATA [IA83-SF]				
POINT NUMBER	RAW DESCRIPTION	ELEVATION	NORTH	EAST
5026	VFCP / CUT X SDWK	618.856	151783.80	2227561.88
5040	VFCP / CUT X SDWK	620.230	152118.49	2227850.15
5041	VFCP / CUT X SDWK	610.861	152161.05	2228012.82
5042	VFCP / CUT X SDWK	595.731	152242.79	2228282.52
5043	VFCP / CUT X SDWK	590.606	152369.39	2228260.01
5402	VFBM / N BURY BOLT	623.189	151861.03	2227642.39
5440	VFBM / TOP CENTER NUT	622.194	152051.22	2227891.76
5441	VFBM / TOP CENTER NUT	599.625	152276.25	2228249.85

10TH STREET CENTERLINE											
NUMBER	START STATION	END STATION	LENGTH	DELTA	RADIUS	CHORD	START N	START E	END N	END E	LINE / CHORD DIRECTION
L1	10+00	14+07.84	407.84				151539.05	2227311.68	151800.45	2227624.74	N50° 08' 20"E
L2	14+07.84	15+99.74	191.90				151800.45	2227624.74	151924.03	2227771.54	N49° 54' 25"E
L3	15+99.74	17+19.83	120.09				151924.03	2227771.54	152001.22	2227863.54	N50° 00' 22"E
L4	17+19.83	18+08.59	88.76				152001.22	2227863.54	152058.22	2227931.58	N50° 02' 29"E
L5	18+08.59	18+61.54	52.95				152058.22	2227931.58	152091.94	2227972.41	N50° 26' 50"E
L6	18+61.54	21+54.51	292.97				152091.94	2227972.41	152280.23	2228196.86	N50° 00' 26"E
L7	21+54.51	25+76.48	421.97				152280.23	2228196.86	152550.68	2228520.76	N50° 08' 20"E
L8	25+76.48	30+00	423.52				152550.68	2228520.76	152823.10	2228845.04	N49° 58' 02"E

© Bolton & Menk, Inc. 2025. All Rights Reserved. A:\MECHUK\_C\IA2504\1031000\1031000\1031000.dwg 4/1/2025 9:47:51 AM



401 FIRST ST SE, SUITE 201  
 CEDAR RAPIDS, IOWA 52401  
 Phone: (319) 362-3219  
 Email: CedarRapids@bolton-menk.com  
 www.bolton-menk.com

DESIGNED	REV	DESCRIPTION	DATE
RCK	0	PRELIMINARY	
DRAWN			
BRH			
CHECKED			
DEM			
CLIENT PROJ. NO.			
24X.136508000			

CITY OF KEOKUK, IOWA  
 10TH STREET MILL AND OVERLAY  
 REFERENCES & BENCHMARKS

SHEET  
**G.03**



1002 BANK STREET  
HOUGH, HAROLD JR/VIRGINIA

1003 BANK STREET  
GAMEZ, JUAN CARLOS  
HERNANDEZ

6-INCH BEAM CURB

STA:17+60.00, 18.00' LT  
FG = 619.17 [CURB FACE]

STA:17+67.74, 17.75' LT  
FG = 618.98 [CURB FACE]

STA:17+77.30, 17.72' LT  
FG = 618.74 [CURB FACE]

STA:17+82.31, 18.74' LT  
FG = 618.61 [CURB FACE]

STA:17+86.59, 22.42' LT  
FG = 618.47 [CURB FACE]

STA:17+88.35, 27.42' LT  
FG = 618.39 [CURB FACE]

STA:17+88.38, 32.46' LT  
FG = 618.31 [CURB FACE]  
CURB RETURN LOW POINT

STA:17+88.50, 37.46' LT  
FG = 618.33 [CURB FACE]

STA:18+23.70, 37.70' LT  
FG = 617.60 [CURB FACE]

STA:18+23.90, 32.70' LT  
FG = 617.56 [CURB FACE]

STA:18+23.99, 27.43' LT  
FG = 617.53 [CURB FACE]

STA:18+25.76, 22.44' LT  
FG = 617.49 [CURB FACE]

STA:18+31.60, 18.18' LT  
FG = 617.34 [CURB FACE]

STA:18+36.60, 17.76' LT  
FG = 617.03 [CURB FACE]

STA:18+44.62, 17.80' LT  
FG = 616.55 [CURB FACE]

STA:18+55.00, 18.05' LT  
FG = 615.93 [CURB FACE]

18+00

S. 10TH STREET

STA:17+65.00, 17.59' RT  
FG = 619.18 [CURB FACE]

STA:17+72.96, 18.02' RT  
FG = 619.02 [CURB FACE]

STA:17+77.21, 18.03' RT  
FG = 618.93 [CURB FACE]

STA:17+82.21, 18.04' RT  
FG = 618.83 [CURB FACE]

STA:17+88.55, 23.17' RT  
FG = 618.43 [CURB FACE]

STA:17+88.59, 28.17' RT  
FG = 618.34 [CURB FACE]

STA:17+88.61, 33.04' RT  
FG = 618.10 [CURB FACE]

STA:17+89.02, 38.03' RT  
FG = 617.85 [CURB FACE]

STA:18+31.76, 18.01' RT  
FG = 617.44 [CURB FACE]

STA:18+36.76, 17.99' RT  
FG = 617.12 [CURB FACE]

STA:18+40.09, 17.97' RT  
FG = 616.90 [CURB FACE]

STA:18+45.00, 18.31' RT  
FG = 616.58 [CURB FACE]

STA:18+24.51, 23.15' RT  
FG = 617.88 [CURB FACE]

STA:18+24.54, 28.15' RT  
FG = 617.81 [CURB FACE]

STA:18+24.56, 29.80' RT  
FG = 617.78 [CURB FACE]

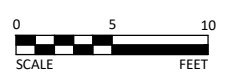
STA:18+24.22, 37.80' RT  
FG = 617.66 [CURB FACE]

BANK STREET

6-INCH BEAM CURB

928 BANK STREET  
STURM, TYLER J/BRANDY L

927 BANK STREET  
SHOEMAKER, KAREN ALICA



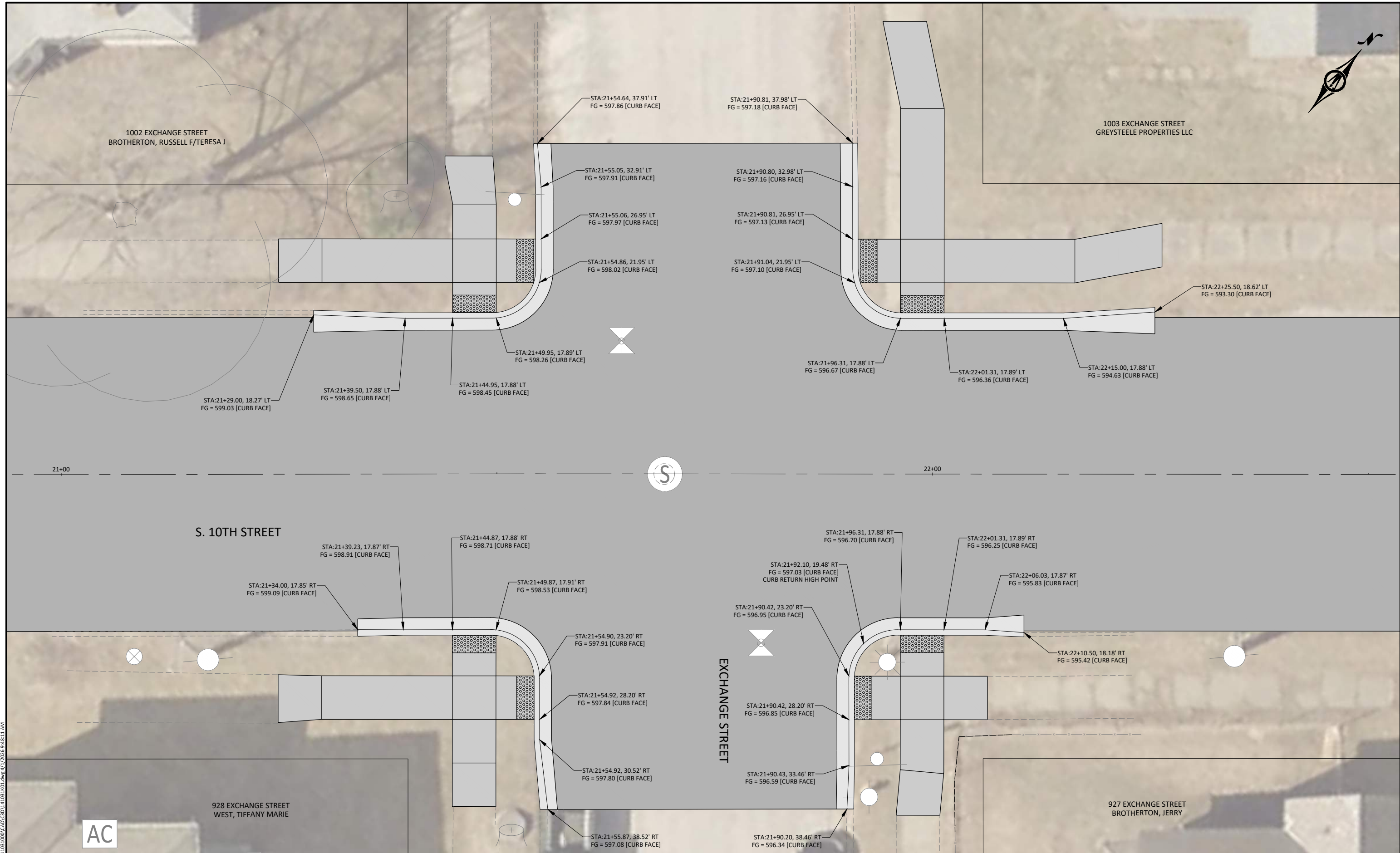
401 FIRST ST SE, SUITE 201  
CEDAR RAPIDS, IOWA 52401  
Phone: (319) 362-3219  
Email: CedarRapids@bolton-menk.com  
www.bolton-menk.com

DESIGNED	REV	DESCRIPTION	DATE
RCK	0	PRELIMINARY	
BRE			
DEM			
CLIENT PROJ. NO.		24X.136508000	

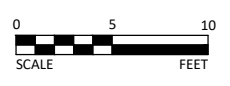
CITY OF KEOKUK, IOWA  
10TH STREET MILL AND OVERLAY  
INTERSECTION DETAILS - BANK STREET

SHEET  
K.01

© Bolton & Menk, Inc. 2025. All Rights Reserved  
PROJECT: 24X.136508000 (CAD) 1/14/2025 9:48:08 AM



© Bolton & Menk, Inc. 2026. All Rights Reserved. 24X.136508000 (CAD) 141031101.dwg 4/1/2026 9:48:11 AM



**BOLTON & MENK**  
401 FIRST ST SE, SUITE 201  
CEDAR RAPIDS, IOWA 52401  
Phone: (319) 362-3219  
Email: CedarRapids@bolton-menk.com  
www.bolton-menk.com

DESIGNED	REV	DESCRIPTION	DATE
RCK	0	PRELIMINARY	
DRAWN			
BRH			
CHECKED			
DEM			
CLIENT PROJ. NO.	24X.136508000		

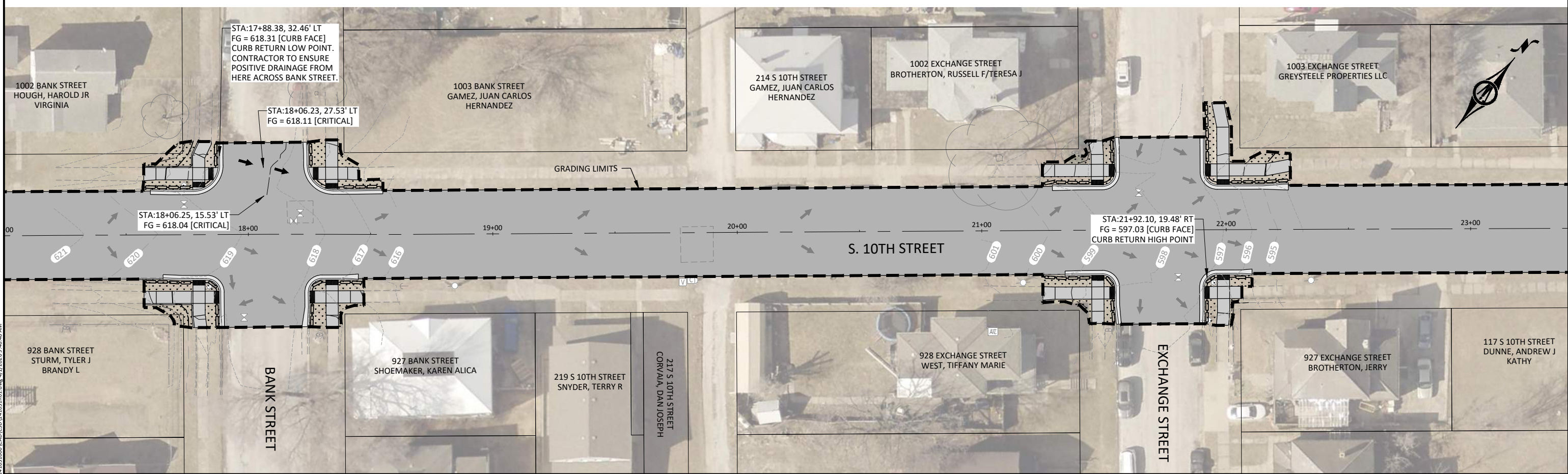
CITY OF KEOKUK, IOWA  
10TH STREET MILL AND OVERLAY  
INTERSECTION DETAILS - EXCHANGE STREET

SHEET  
K.02



### EROSION CONTROL LEGEND

	WATTLE		INLET PROTECTION
	SOD		EXISTING/PROPOSED DRAINAGE FLOW



© Bolton & Menk, Inc. 2025. All Rights Reserved. P:\MECH\24-103\103101.dwg, 4/1/2025 9:48:48 AM

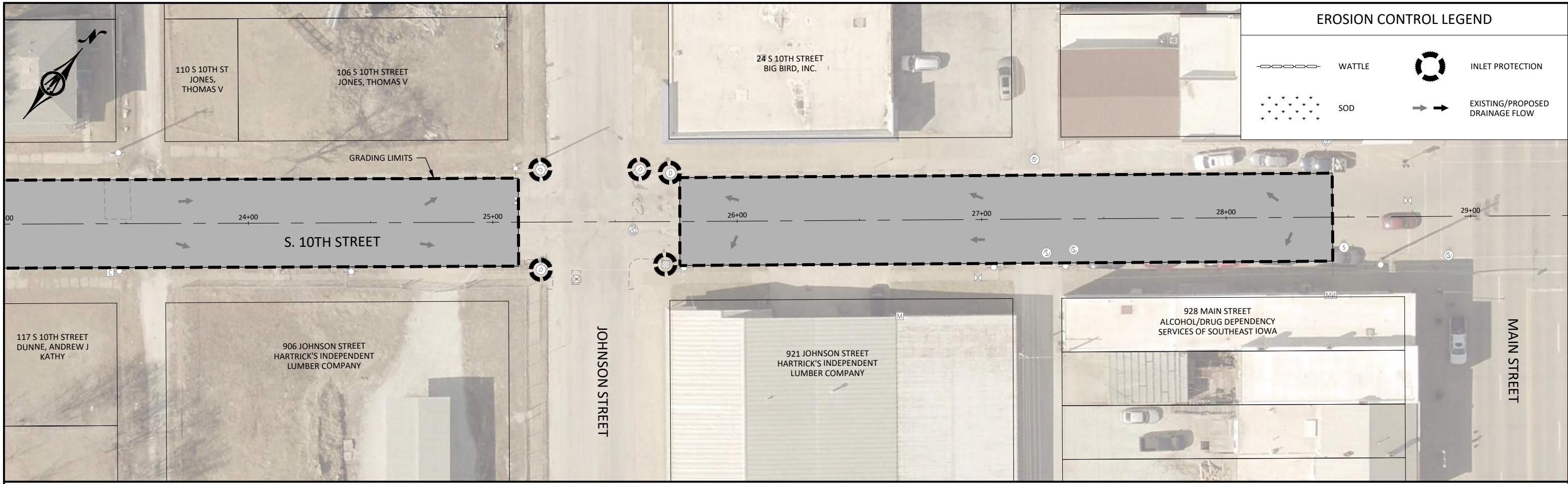


**BOLTON & MENK**  
 401 FIRST ST SE, SUITE 201  
 CEDAR RAPIDS, IOWA 52401  
 Phone: (319) 362-3219  
 Email: CedarRapids@bolton-menk.com  
 www.bolton-menk.com

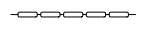


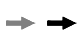
DESIGNED	REV	DESCRIPTION	DATE
RCK	0	PRELIMINARY	
BRH			
DEM			
CLIENT PROJ. NO.: 24X.136508000			

CITY OF KEOKUK, IOWA  
 10TH STREET MILL AND OVERLAY  
 EROSION & SEDIMENT CONTROL

SHEET  
**R.01**



**EROSION CONTROL LEGEND**

-  WATTLE
-  SOD
-  INLET PROTECTION
-  EXISTING/PROPOSED DRAINAGE FLOW

© Bolton & Menk, Inc. 2026. All Rights Reserved. P:\MECHUK\_C\142524\142524\142524\142524.dwg 4/1/2026 9:48:51 AM



401 FIRST ST SE, SUITE 201  
 CEDAR RAPIDS, IOWA 52401  
 Phone: (319) 362-3219  
 Email: CedarRapids@bolton-menk.com  
 www.bolton-menk.com

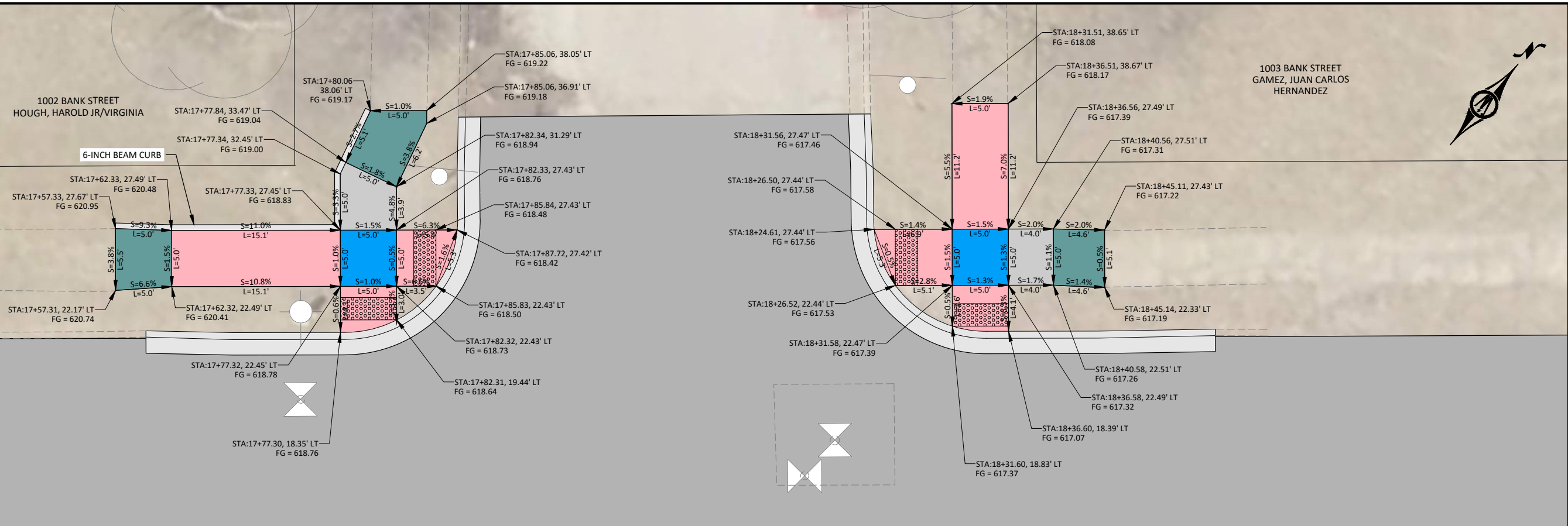
DESIGNED	REV	DESCRIPTION	DATE
RCK	0	PRELIMINARY	
DRAWN			
BRH			
CHECKED			
DEM			
CLIENT PROJ. NO.	24X.136508000		

CITY OF KEOKUK, IOWA  
 10TH STREET MILL AND OVERLAY  
 EROSION & SEDIMENT CONTROL

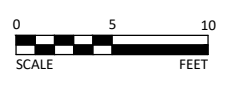
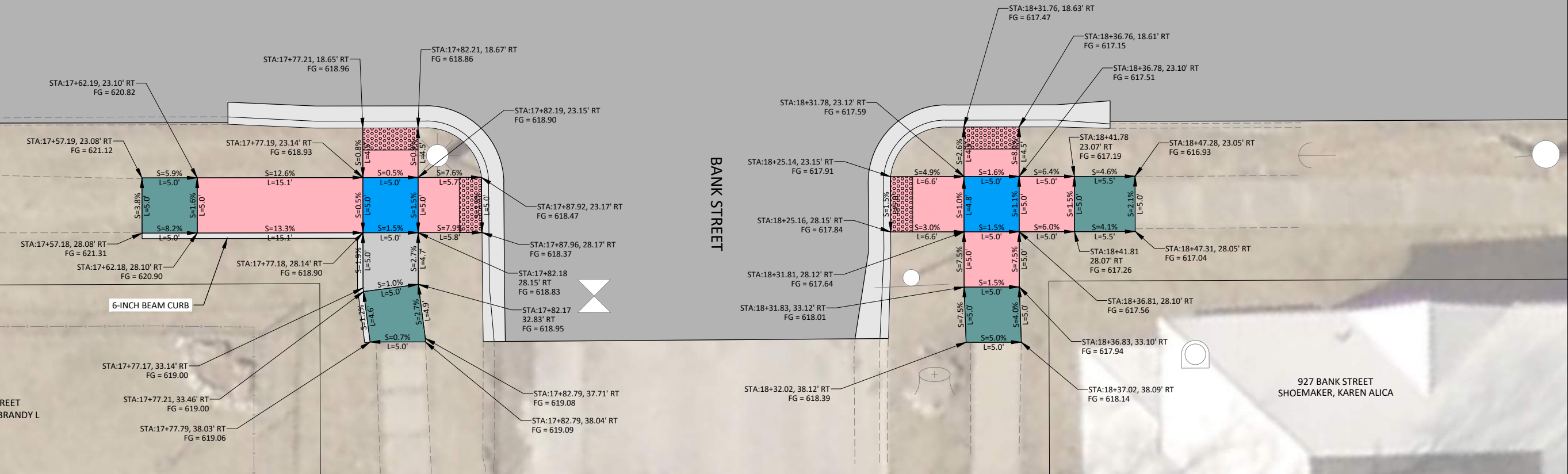
SHEET  
**R.02**

**SIDEWALK LEGEND**

- 5" PCC SIDEWALK
- 6" PCC TURNING SPACE
- 6" PCC ADA RAMP
- DETECTABLE WARNING
- 5" PCC TRANSITION PANEL



**S. 10TH STREET**



**BOLTON & MENK**  
 401 FIRST ST SE, SUITE 201  
 CEDAR RAPIDS, IOWA 52401  
 Phone: (319) 362-3219  
 Email: CedarRapids@bolton-menk.com  
 www.bolton-menk.com

DESIGNED	REV	DESCRIPTION	DATE
RCK	0	PRELIMINARY	
BRE			
DEM			
CLIENT PROJ. NO.	24X.136508000		

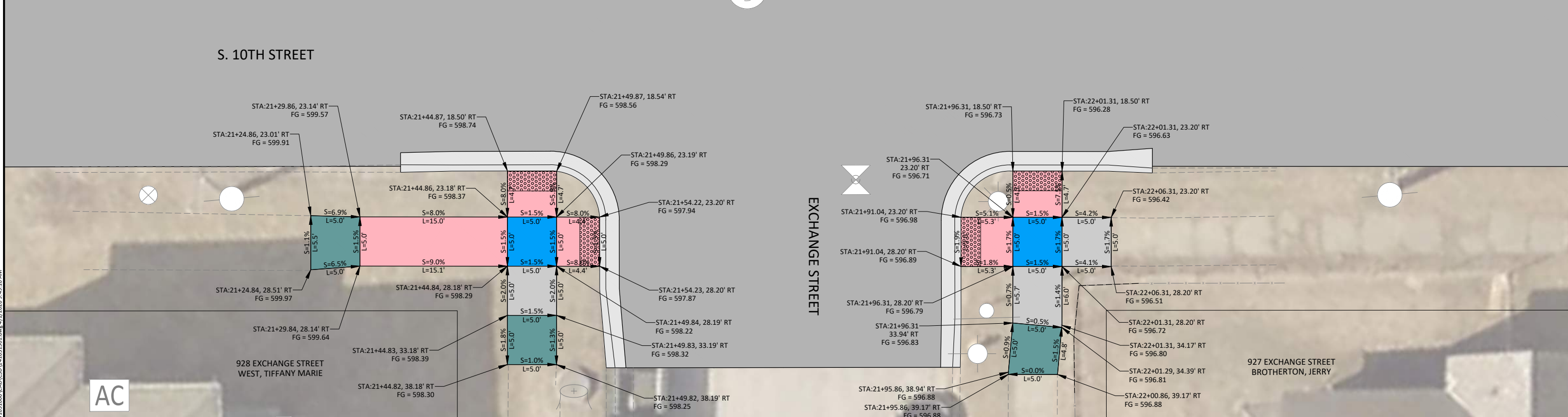
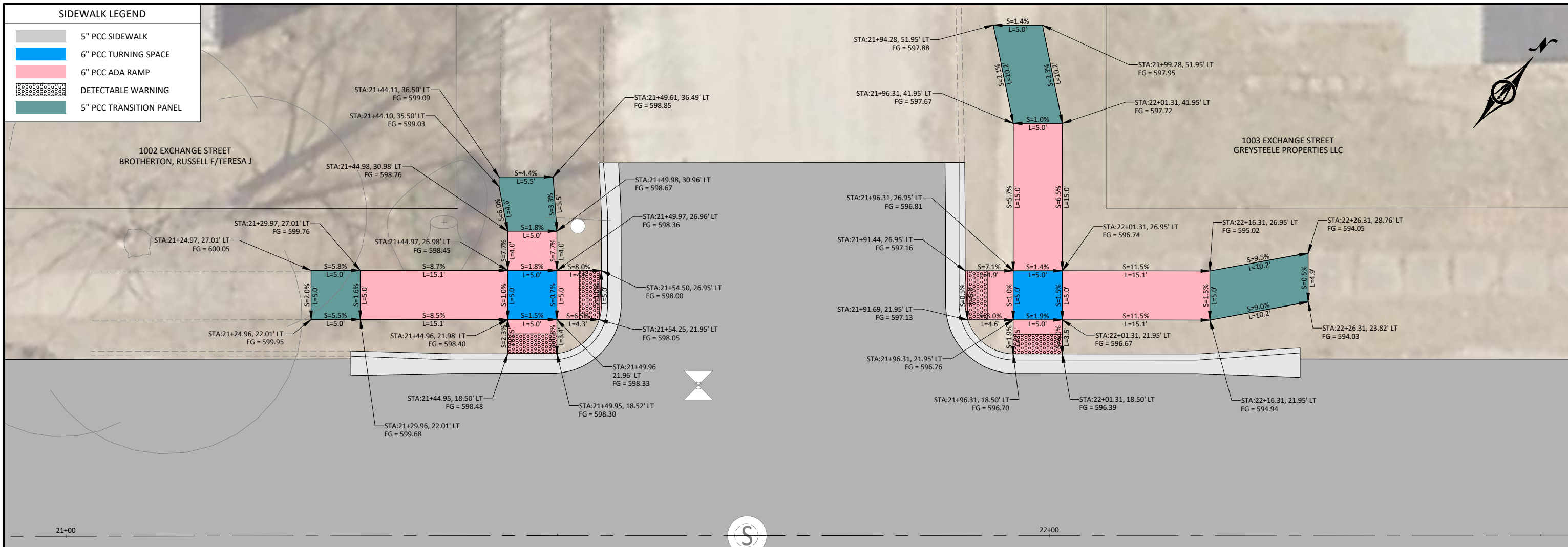
**CITY OF KEOKUK, IOWA**  
 10TH STREET MILL AND OVERLAY  
 SIDEWALK COMPLIANCE - BANK STREET

SHEET  
**S.01**

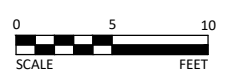
© Bolton & Menk, Inc. 2025. All Rights Reserved.  
 FILENAME: C:\Users\jbrunson\OneDrive\Documents\10th Street Mill and Overlay\10th Street Mill and Overlay.dwg 4/1/2025 9:49:07 AM

**SIDEWALK LEGEND**

- 5" PCC SIDEWALK
- 6" PCC TURNING SPACE
- 6" PCC ADA RAMP
- DETECTABLE WARNING
- 5" PCC TRANSITION PANEL



© Bolton & Menk, Inc. 2026. All Rights Reserved. PROJECT: 24X136508000 (CAD) 1410313101.dwg 4/1/2026 9:49:10 AM



401 FIRST ST SE, SUITE 201  
CEDAR RAPIDS, IOWA 52401  
Phone: (319) 362-3219  
Email: CedarRapids@bolton-menk.com  
www.bolton-menk.com

DESIGNED	REV	DESCRIPTION	DATE
RCK	0	PRELIMINARY	
DRAWN			
BRH			
CHECKED			
DEM			
CLIENT PROJ. NO.	24X136508000		